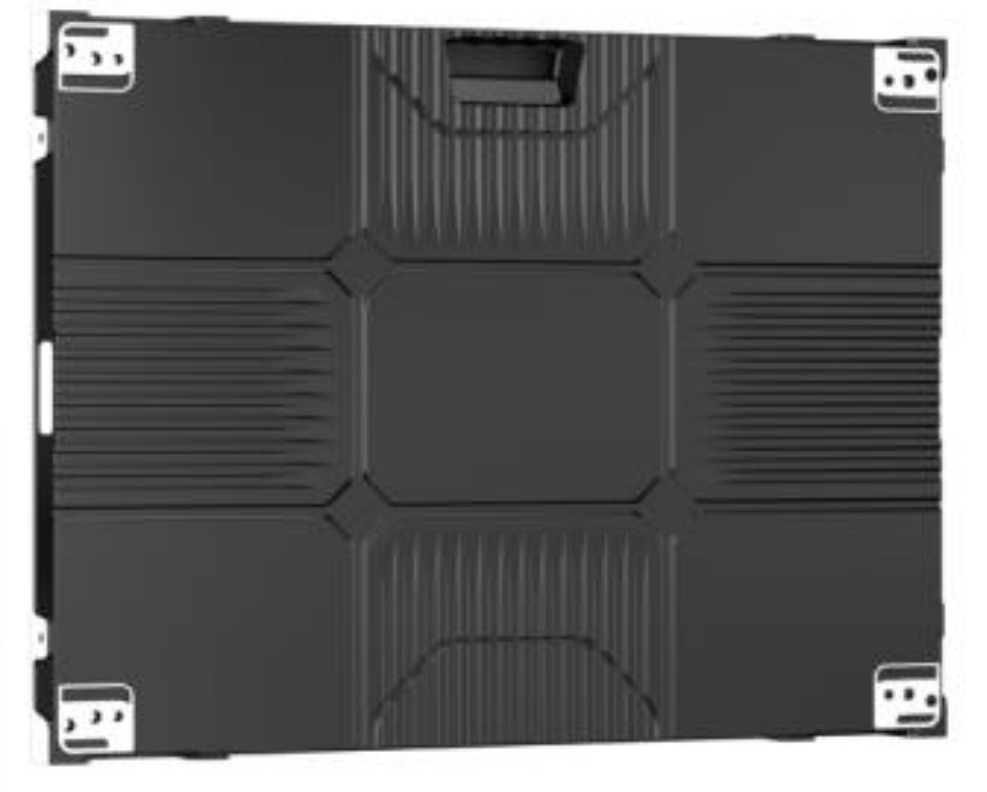




CABINET DISPLAY

TCI-P2-640-480



- **High-Resolution Display:** The TCI-P2-640-480 offers a high resolution of 320x240 pixels, delivering crisp and detailed visuals ideal for indoor environments where clarity and precision are essential.
- **Advanced LED Technology:** Equipped with SMD1515 LEDs, known for their compact size and high brightness, this display provides vibrant and consistent colors, ensuring your content is displayed with excellent visual quality.
- **Pixel Pitch:** The 2mm pixel pitch increases the pixel density, resulting in smooth and sharp images, even when viewed up close. This makes it perfect for displaying detailed content in environments where viewers are in close proximity to the screen.
- **Ideal for Indoor Use:** The TCI-P2-640-480 is specifically engineered for indoor applications, making it ideal for use in settings such as retail environments, conference rooms, exhibitions, and control centers where high-definition displays are required.
- **Energy Efficiency:** Utilizing the efficient SMD1515 LED technology, this display not only delivers superior image quality but also operates with reduced energy consumption, helping to lower operational costs while maintaining excellent performance.
- **Versatile Applications:** The TCI-P2-640-480 is versatile enough to be used in a wide range of indoor settings, including advertising, digital signage, presentations, and information displays, offering flexible options for different content types and environments.

Model	TCI-P2-640-480
Pixel Pitch (mm)	2.0mm
Led Configuration	SMD1515
Module Size	320 x 160
Module Quantity	6 Module (2x3)
Card Quantity	2 Card
Cabinet Resolution (Pixel)	320 x 240
Cabinet Dimension (mm)	640 x 480 x 69,5
Cabinet Weight	7Kg
Cabinet Material	Aluminum Alloy
Brightness	1200 Nits
Viewing Angle	150/150
Bit Depth	14 - 16bits
Color Temperature	2.800K ~ 10.000K
Video Frequency	50/60Hz
Refresh Rate	3840 Hz
Power Source	220VAC – 50/60Hz
Max Power	200W
Operating Humidity Level	10% ~ 80%
Operating Temperature	-20°C ~ 40°C
IP Protection	IP31
Maintenance Support	Front – Back

