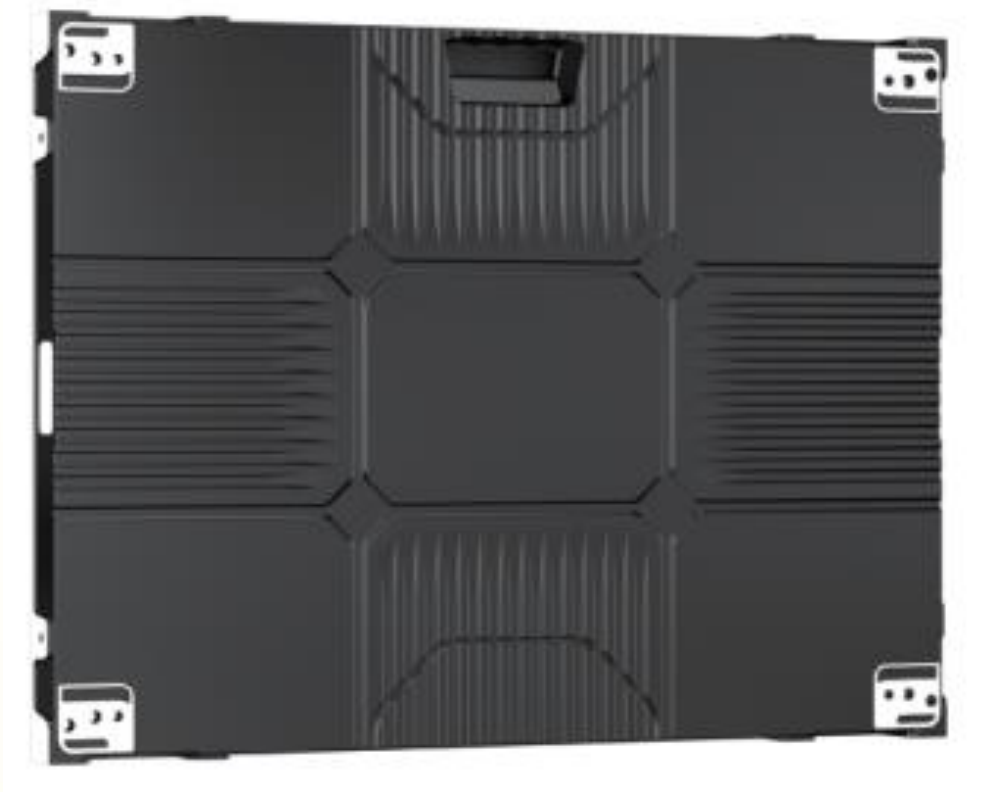




# CABINET DISPLAY

## TCI-P2-640-480



- **High-Resolution Display:** The TCI-P2-640-480 offers a high resolution of 320x240 pixels, delivering crisp and detailed visuals ideal for indoor environments where clarity and precision are essential.
- **Advanced LED Technology:** Equipped with SMD1515 LEDs, known for their compact size and high brightness, this display provides vibrant and consistent colors, ensuring your content is displayed with excellent visual quality.
- **Pixel Pitch:** The 2mm pixel pitch increases the pixel density, resulting in smooth and sharp images, even when viewed up close. This makes it perfect for displaying detailed content in environments where viewers are in close proximity to the screen.
- **Ideal for Indoor Use:** The TCI-P2-640-480 is specifically engineered for indoor applications, making it ideal for use in settings such as retail environments, conference rooms, exhibitions, and control centers where high-definition displays are required.
- **Energy Efficiency:** Utilizing the efficient SMD1515 LED technology, this display not only delivers superior image quality but also operates with reduced energy consumption, helping to lower operational costs while maintaining excellent performance.
- **Versatile Applications:** The TCI-P2-640-480 is versatile enough to be used in a wide range of indoor settings, including advertising, digital signage, presentations, and information displays, offering flexible options for different content types and environments.

<b>Model</b>	TCI-P2-640-480
<b>Pixel Pitch (mm)</b>	2.0mm
<b>Led Configuration</b>	SMD1515
<b>Module Size</b>	320 x 160
<b>Module Quantity</b>	6 Module (2x3)
<b>Card Quantity</b>	2 Card
<b>Cabinet Resolution (Pixel)</b>	320 x 240
<b>Cabinet Dimension (mm)</b>	640 x 480 x 69,5
<b>Cabinet Weight</b>	7Kg
<b>Cabinet Material</b>	Aluminum Alloy
<b>Brightness</b>	1200 Nits
<b>Viewing Angle</b>	150/150
<b>Bit Depth</b>	14 - 16bits
<b>Color Temperature</b>	2.800K ~ 10.000K
<b>Video Frequency</b>	50/60Hz
<b>Refresh Rate</b>	3840 Hz
<b>Power Source</b>	220VAC – 50/60Hz
<b>Max Power</b>	200W
<b>Operating Humidity Level</b>	10% ~ 80%
<b>Operating Temperature</b>	-20°C ~ 40°C
<b>IP Protection</b>	IP31
<b>Maintenance Support</b>	Front – Back

