



# TCD COB SERIES

**FLIP-CHIP COB HD LED DISPLAY**

# 01

## APPEARANCE

Pixel Pitch: P0.625/0.78/0.93/1.25/1.56/1.87



IP54 protection level



Integrated design



No color difference



Low consumption  
and energy saving

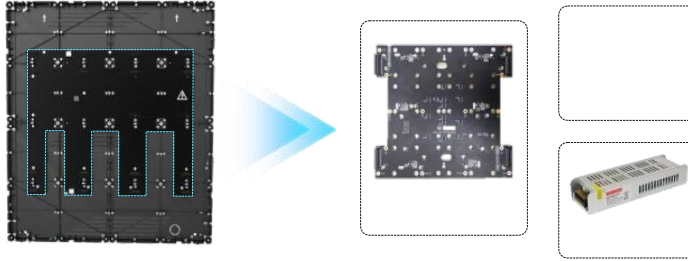


High grayscale level



Precision splicing  
adjustable design

Power supply, system and HUB three-in- one design.



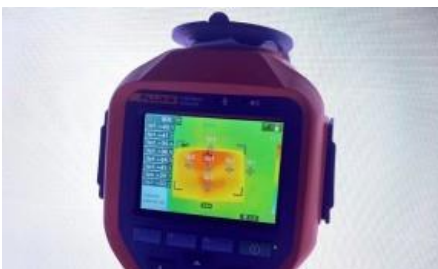
Matte and anti-glare design effectively suppresses ambient light reflection and greatly improves visibility under strong light



Light board surface level IP54, panel hardness 4H



Low-power cold screen, energy-saving common cathode/anode circuit, low temperature rise, low power consumption.



Under normal temperature,  
white balance temperature  
 $\leq 45^{\circ}\text{C}$



Single cabinet power consumption  
 $\approx 65\text{w}$ , power consumption per  
square meter  $\approx 325\text{w}$

Parameter Name	P0.625	P0.78	P0.93	P1.25	P1.56	P1.87
Pixel Pitch (mm)	0.625	0.78	0.93	1.25	1.56	1.87
Cabinet Size (W×H×D/mm)	600×337.5×39.5		600*337.5*39.5   600*675*39.5			
Cabinet resolution (W×H)	960×540	768×432	640×360 640×720	480×270 480×540	384×216 384×432	320×180 320×360
Module arrangement (W×H)	4×2		4×2   4×4			
Circuit scheme	Energy - Saving			Standard		
Cabinet Weight (kg)	600×337.5×39.5 ≈ 4   600*675*39.5 ≈ 7.9					
Maintenance Mode	Front Service					
Module Protection	IP54 ( Light board surface)					
Cabinet material	Die-cast aluminum					
Module Resolution (W×H)	240×270	192×216	160×180	120×135	96×108	80×90
Pitch Density (Pixles/㎡)	2560000	1638400	1137777	640000	409600	284444
Encapsulation process	COB encapsulation					
Module Size (W×H×D/mm)	150×168.75					
Refresh Rate (Hz)	3840					
Brightness (nit)	≥600					
Grey Scale (bit)	18~20					
Contrast (CR)	20000:1 ( No ambient light conditions)					
Viewing Angle(°)	170°					
Best Sight Distance (m)	≥0.9	≥1.2	≥1.4	≥1.9	≥2.3	≥2.8
Working Voltage (v)	AC : 100~240 · 50/60Hz					
Peak Power Consumption (w/㎡)	≤325					
Ave.Power Consumption (w/㎡)	≈135					
Continuous Working Hours (hrs)	≥7×24hrs					
Life Span (hrs)	100,000					
Operating humidity and temperature range (°C)	-10°C- +40°C/ 10%RH-90%RH					
Storage humidity and temperature range (°C)	-20°C- +60°C/ 10%RH-90%RH					

**Statement:** The power, grayscale level and refresh rate is reference, the specification subjected to change without prior notice. The final right of interpretation for product specifications, models and technical indicators are belong to our company.



**TWT APPLIED TECHNOLOGY AND SERVICES PTE LTD**

TWT reserves the right to change products' dimensions and specifications without notice.

TWT APPLIED TECHNOLOGY AND SERVICES PTE LTD reserves the ultimate right to the interpretation of this catalogue.

**ADDRESS:** 71 BUKIT BATOK CRESCENT  
#09-04 PRESTIGE CENTRE SINGAPORE  
658071

**EMAIL:** [info@twt-technology.sg](mailto:info@twt-technology.sg)