

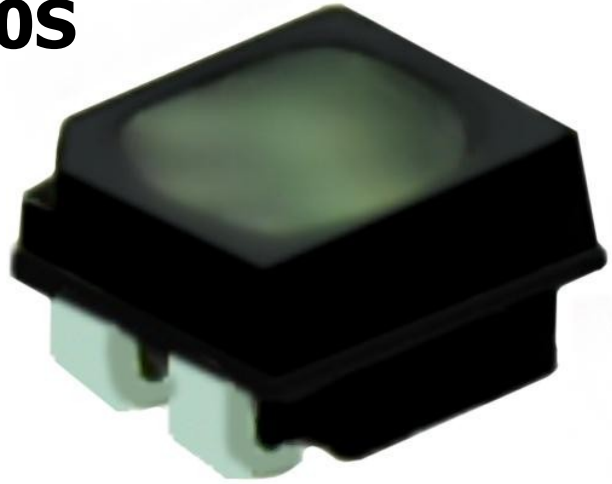


P2 - TWI40S

LED MODULE

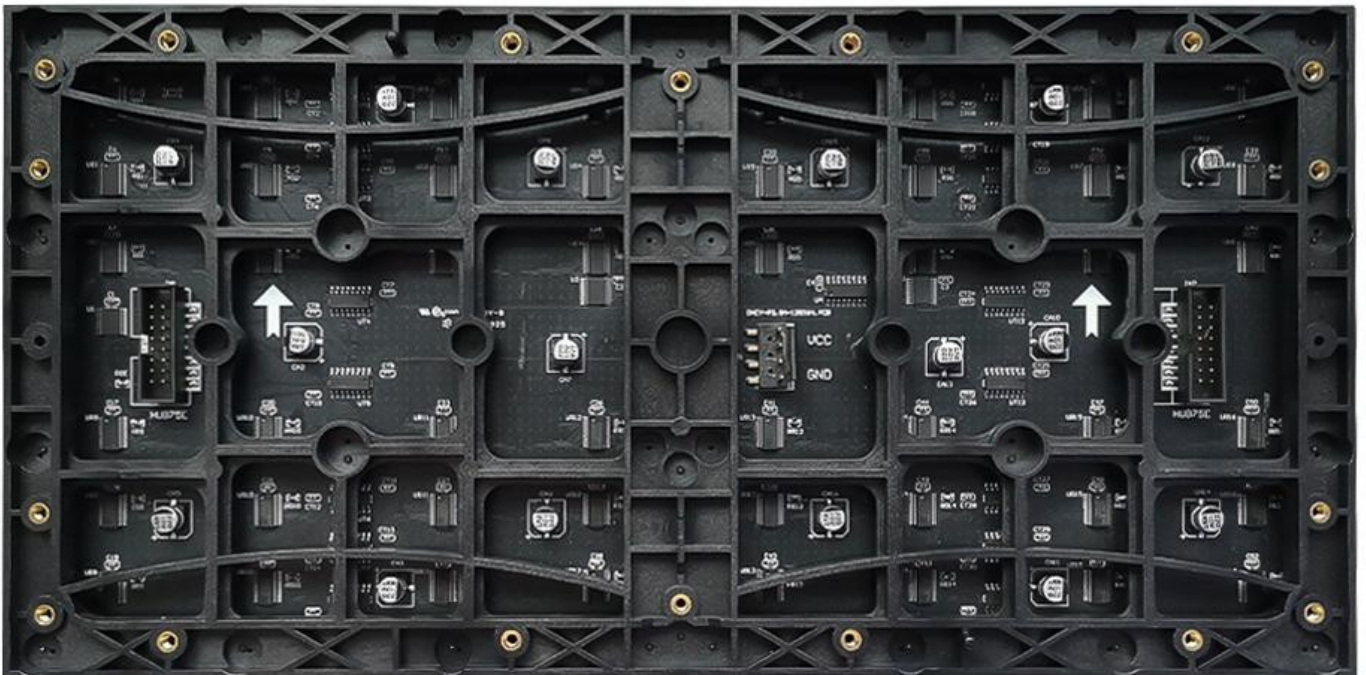
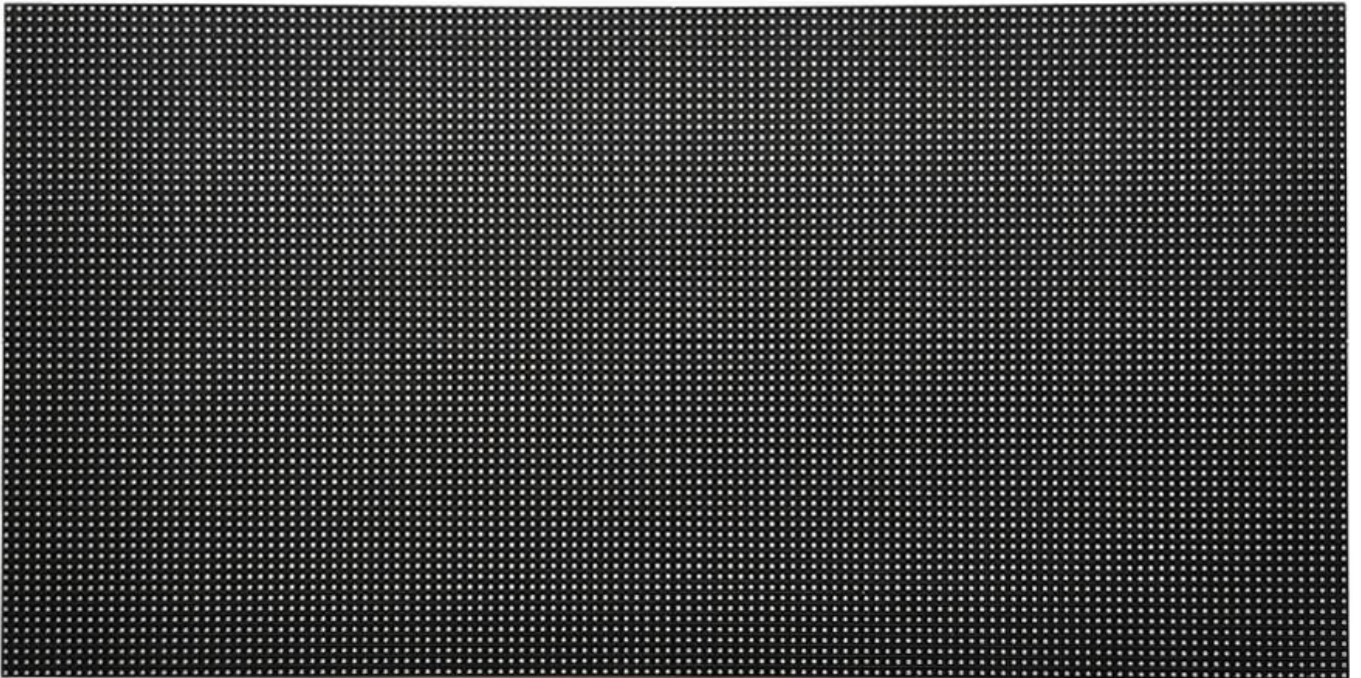
LED LAMP SPECIFICATION

Model No.: P2-TWI40S



Color	Package	Intensity	Viewing Angle	Wavelength	Testing Conditions
Red	SMD1515	38-50mcd	160°	618-623nm	25 °C,8mA
Green		150-195mcd	160°	519-523nm	25 °C,5mA
Blue		19-25mcd	160°	467-471nm	25 °C,3mA

MODULE PHOTO



TWT APPLIED TECHNOLOGY AND SERVICES PTE LTD

TWT reserves the right to change products' dimensions and specifications without notice
TWT APPLIED TECHNOLOGY AND SERVICES PTE LTD reserves the ultimate right to the interpretation of this catalogue.
ADDRESS : 68 SUNGEI KADUT LOOP E 06 - 01 NUTZ CENTER, SINGAPORE 729504
TEL : +65 6367 3272 FAX : +65 6367 0763



SPECIFICATION

Pixel Pitch	2mm
Pixel Configuration	SMD1515
Density	250,000 pixels/m ²
Module Resolution	160pixel(L) * 80pixel(H)
Module Dimension	320mm(L) * 160mm(H) * 18mm(D)
Scan Mode	Constant current, 1/40s
Brightness	≥800 cd/m ²
Viewing Angle	160°(Horizontal); 160°(Vertical)
Best Viewing Distance	≥2m
Gray Grade	16 bits
Display Color	16 millions colors
Brightness Adjustment	100 grades by software or automatically by sensor
Brightness Scale	256
Power Consumption	≤ 500W/m ²
Frame Frequency	≥60Hz
Refresh Frequency	≥1920Hz / 3840Hz – 6000Hz
Input Signal	Composite Video, S-video, DVI, HDMI, SDI, HD-SDI
Support VGA Mode	800*600, 1024*768, 1280*1024, 1600*1200
Color Temperature	5000—9300 adjustable
Brightness Correction	Pixel by pixel, module by module, cabinet by cabinet



SPECIFICATION

Working Temperature	-20~+60 °C
Storage Temperature	-30~+70 °C
Working Humidity	10%~90% RH
Lifetime	100,000 hours
MTBF	>5000 hours
Continuous Operating Time	≥72 hours
Protection Grade	IP43
Out-of-Control Pixel Rate	≤0.01%

TWT APPLIED TECHNOLOGY AND SERVICES PTE LTD

TWT reserves the right to change products' dimensions and specifications without notice
TWT APPLIED TECHNOLOGY AND SERVICES PTE LTD reserves the ultimate right to the interpretation of this catalogue.
ADDRESS : 68 SUNGAI KADUT LOOP # 06 - 01 NUTZ CENTER, SINGAPORE 729504
TEL : +65 6367 3272 FAX : +65 6367 0763

