

CABINET DISPLAY

TCI Series

In the ever-evolving world of digital displays, LED Cabinet Displays have emerged as the pinnacle of visual communication technology. This series of LED displays is designed to meet the diverse needs of businesses and organizations, offering unparalleled clarity, vibrant colors, and reliable performance. Whether used for indoor or outdoor applications, these displays are the ideal solution for creating impactful visual experiences.

- **Advanced LED Technology:** At the heart of the LED TCI series is advanced LED technology, featuring a range of high-quality SMD (Surface-Mounted Diode) LEDs. These displays utilize SMD LEDs like SMD2020, SMD1515, and others, depending on the specific model, ensuring bright, consistent, and energy-efficient visuals. The use of such LEDs not only provides superior brightness and color accuracy but also enhances the durability and longevity of the display.
- **High Resolution and Pixel Pitch Options:** The LED TCI series offers various resolution and pixel pitch options, tailored to meet different viewing distance requirements. From high-resolution models like the TCI-P2-640-480 with a 320x240 resolution and a 2mm pixel pitch, to the TCI-P4-320-640 with an 80x160 resolution and a 4mm pixel pitch, there's a display for every application. These features ensure that the content is sharp and clear, whether the audience is viewing the display from up close or from a distance.
- **Versatile Applications:** One of the key strengths of the LED TCI series is its versatility. These displays are suitable for a wide range of applications, including:
 - **Retail and Advertising:** Perfect for creating eye-catching advertisements and promotions in shopping malls, retail stores, and other commercial spaces.
 - **Corporate and Conference Settings:** Ideal for presentations, video walls, and digital signage in corporate offices, conference rooms, and exhibitions.
 - **Public Information Displays:** Effective in providing real-time information in public spaces like airports, train stations, and city squares
 - **Entertainment and Events:** Enhances the visual experience at concerts, festivals, and other live events by delivering dynamic and immersive visuals.
- **Robust and Durable Design:** Designed with durability in mind, the LED TCI series is built to withstand the demands of both indoor and outdoor environments. The outdoor models are equipped with weather-resistant features, including water and dust resistance, ensuring reliable operation in various weather conditions. Indoor models are crafted with sleek and modern designs that blend seamlessly into any professional setting.
- **Energy Efficiency:** Energy efficiency is a hallmark of the LED TCI series. By utilizing cutting-edge LED technology, these displays offer bright and vivid visuals while consuming less power. This not only helps in reducing operational costs but also contributes to a greener and more sustainable environment.
- **Customization and Scalability:** The LED TCI series is highly customizable, allowing for different configurations based on the specific needs of the user. Whether you need a single display unit or a large-scale video wall, the modular design of these displays allows for easy scalability and flexibility in installation.

640*320



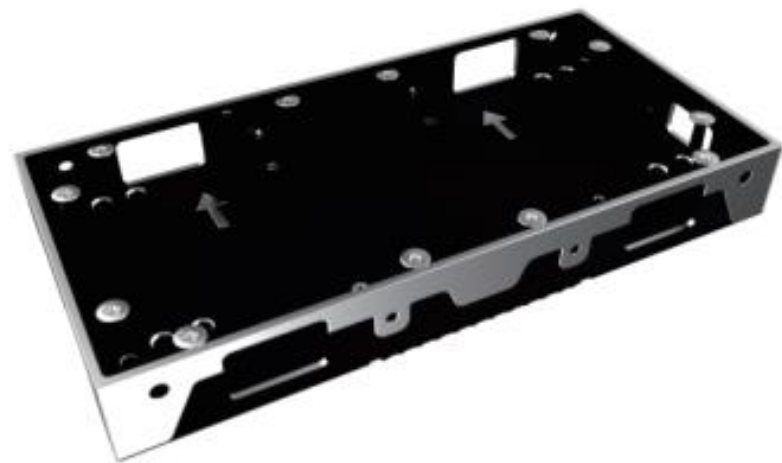
640*480



640*640



320*160



320*480



320*640



Type	Outdoor	Indoor					
Model	TCO-P3.076-320-480	TCI-P1.53-320-160	TCI-P1.86-320-480	TCI-P2-640-480	TCI-P2-640-640	TCI-P2.5-640-320	TCI-P4-320-640
Pixel Pitch (mm)	3.076mm	1.53mm	1.86mm	2.0mm	2.0mm	2.5mm	4.0mm
Led Configuration	SMD1415	SMD1212	SMD1515	SMD1515	SMD1515	SMD2020	SMD2020
Module Size	320 x 160	320 x 160	320 x 160	320 x 160	320 x 160	320 x 160	320 x 160
Module Quantity	3 Module (1x3)	1 Module (1x1)	3 Module (1x3)	6 Module (2x3)	8 Module (2x4)	4 Module (2x2)	4 Module (1x4)
Card Quantity	1 Card	1 Card	1 Card	2 Card	2 Card	1 Card	1 Card
Cabinet Resolution (Pixel)	104 x 156	208 x 104	172 x 258	320 x 240	320 x 320	256 x 128	80 x 160
Cabinet Dimension (mm)	320 x 480 x 60,5	320 x 160 x 60	320 x 480 x 64,8	640 x 480 x 69,5	640 x 640 x 59	640 x 320 x 60,5	320 x 640 x 61,5
Cabinet Weight	3,5Kg	1,8Kg	4,1Kg	7Kg	8,9Kg	4,8Kg	4,2Kg
Cabinet Material	Aluminum Alloy	Aluminum Alloy	Aluminum Alloy	Aluminum Alloy	Aluminum Alloy	Aluminum Alloy	Aluminum Alloy
Brightness	5000 Nits	1200 Nits	1200 Nits	1200 Nits	1200 Nits	1200 Nits	1200 Nits
Viewing Angle	150/150	150/150	150/150	150/150	150/150	150/150	150/150
Bit Depth	14 - 16bits	14 - 16bits	14 - 16bits	14 - 16bits	14 - 16bits	14 - 16bits	14 - 16bits
Color Temperature	2.800K ~ 10.000K	2.800K ~ 10.000K	2.800K ~ 10.000K	2.800K ~ 10.000K	2.800K ~ 10.000K	2.800K ~ 10.000K	2.800K ~ 10.000K
Video Frequency	50/60Hz	50/60Hz	50/60Hz	50/60Hz	50/60Hz	50/60Hz	50/60Hz
Refresh Rate	1920 Hz, 3840 Hz	3840 Hz	3840 Hz	3840 Hz	3840 Hz	1920 Hz, 3840 Hz	1920 Hz, 3840 Hz
Power Source	220VAC – 50/60Hz	220VAC – 50/60Hz	220VAC – 50/60Hz	220VAC – 50/60Hz	220VAC – 50/60Hz	220VAC – 50/60Hz	220VAC – 50/60Hz
Max Power	150W	35W	100W	200W	270W	140W	140W
Operating Humidity Level	10% ~ 80%	10% ~ 80%	10% ~ 80%	10% ~ 80%	10% ~ 80%	10% ~ 80%	10% ~ 80%
Operating Temperature	-20°C ~ 40°C	-20°C ~ 40°C	-20°C ~ 40°C	-20°C ~ 40°C	-20°C ~ 40°C	-20°C ~ 40°C	-20°C ~ 40°C
IP Protection	IP65	IP31	IP31	IP31	IP31	IP31	IP31
Maintenance Support	Front – Back	Front – Back	Front – Back	Front – Back	Front – Back	Front – Back	Front – Back